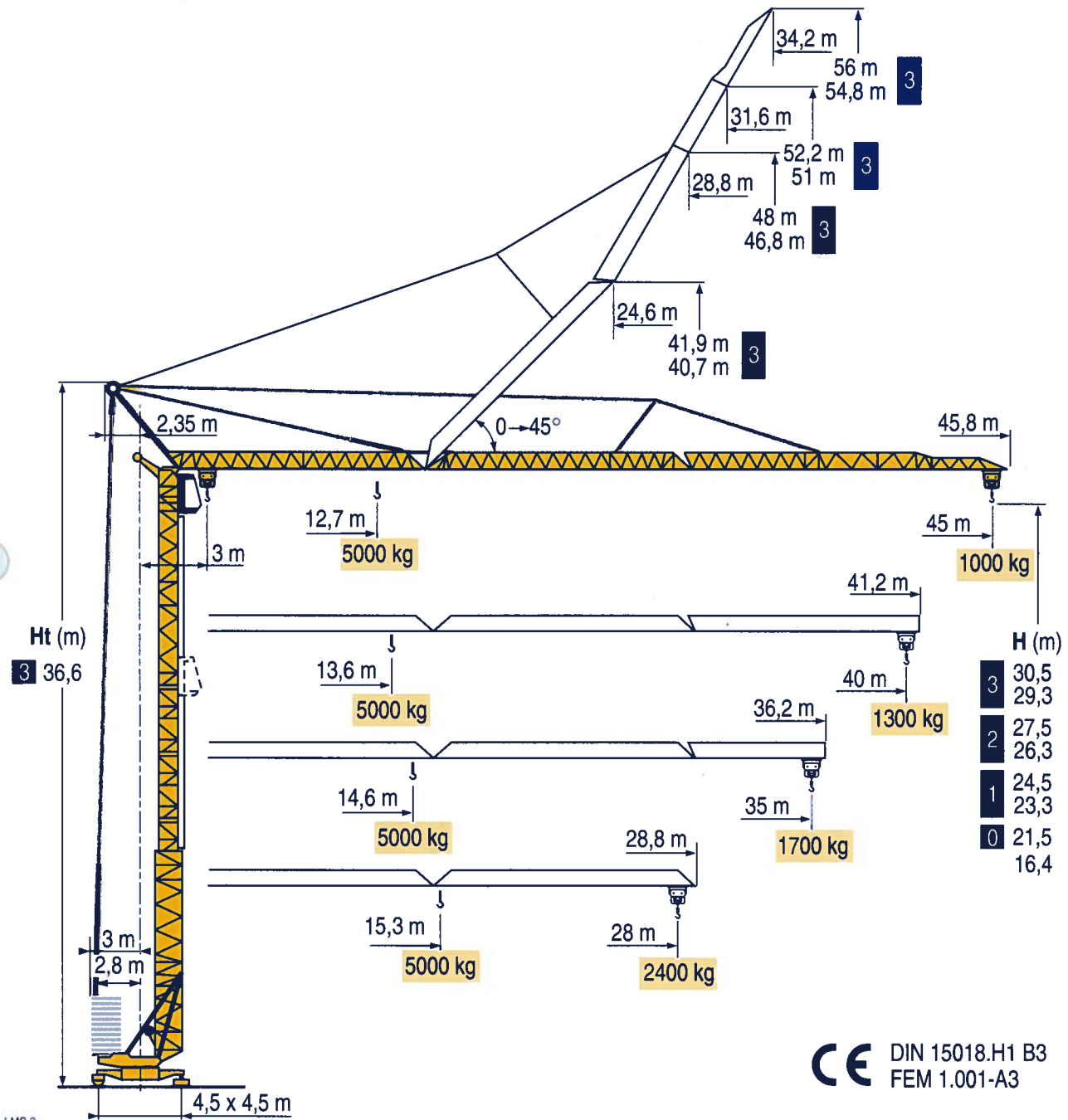


GTMR 346 A



CE DIN 15018.H1 B3
FEM 1.001-A3

- HD HDM
- HDT
- GTMR
- CITY CRANE
- TOPKIT MD
MAXI MD
- MAXI TOPKIT
- Topless MDT
- MR



Courbes de charges
Lastkurven



Load diagrams
Curvas de cargas



Curve di carico
负荷曲线



45 m	3 ▶	12,7	15	17	19	20	23	25	27	30	33	35	37	40	43	45	m
▲▲▲		5000	4070	3480	3040	2850	2390	2160	1960	1710	1520	1400	1300	1180	1070	1000	kg

40 m	3 ▶	13,6	15	17	19	20	23	25	27	30	33	35	37	40	m
▲▲▲		5000	4440	3800	3320	3110	2620	2360	2150	1880	1670	1550	1440	1300	kg

35 m	3 ▶	14,6	15	17	19	20	23	25	27	30	33	35	m
▲▲▲		5000	4830	4140	3610	3390	2860	2580	2350	2060	1830	1700	kg

28 m	3 ▶	15,3	17	19	20	23	25	27	28	m
▲▲▲		5000	4400	3850	3610	3050	2760	2510	2400	kg

LMS 1

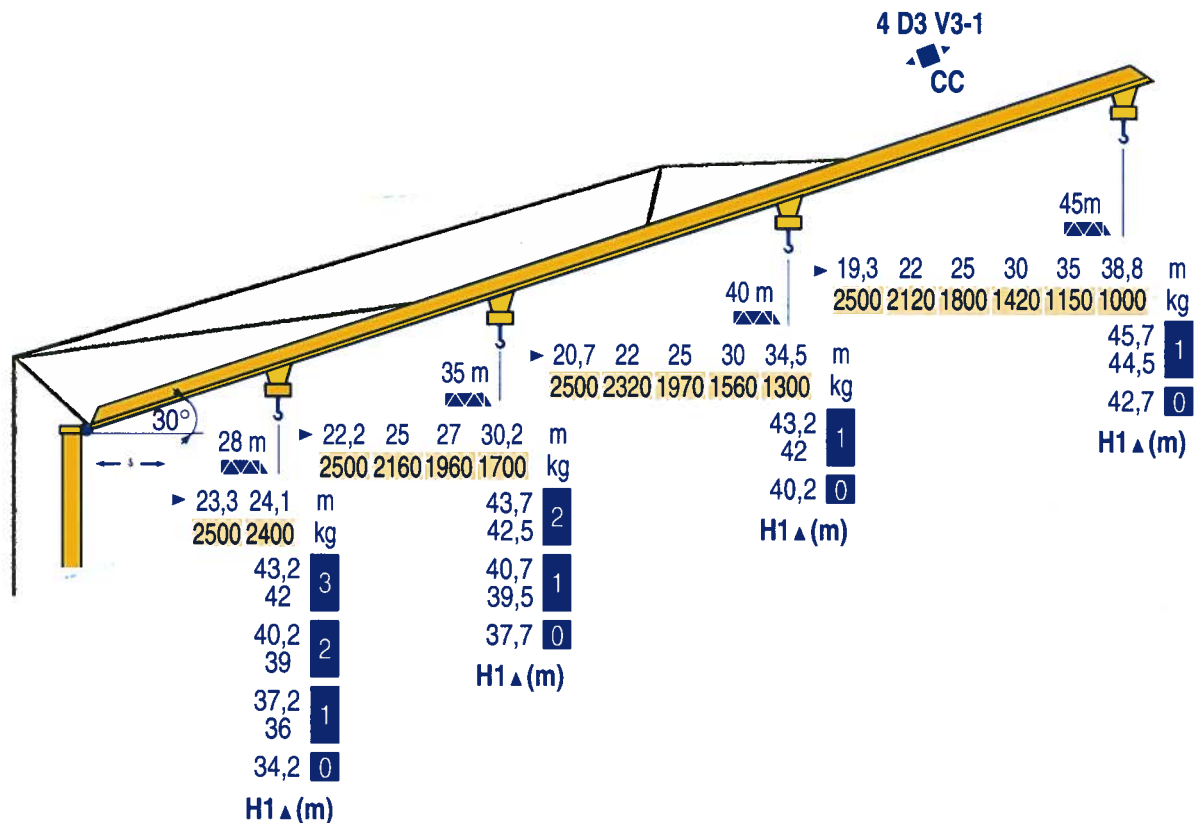
Flèche relevée
Ausleger in Steilstellung



Luffing jib
Flecha izada



Braccio impennato
起升吊臂



LMS 2



Chariot distributeur
et courbes de charges



Traversing trolley
and load diagrams



Carrellino distributore
e curve di carico



Verfahrbare Laufkatze
und Lastkurven



Carro distribuidor
y curvas de cargas



变副滑车和
负荷曲线



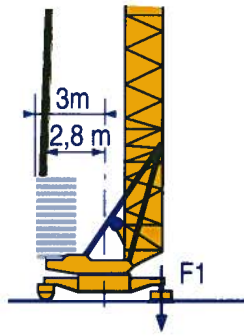
Réactions
Eckdrücke



Reactions
Reacciones



Reazioni
反力



F1 • 32 t ■ 24,5 t

19,2 t

LMS 1

- Réactions en service
- Réactions hors service
- A vide sans lest (ni train de transport) avec flèche et hauteur maximum.



Reactions in service
Reactions out of service
Without load, ballast (or transport axles), with maximum jib and maximum height.



Reazioni in servizio
Reazioni fuori servizio
A vuoto, senza zavorra (ne assali di trasporto) con braccio massimo e altezza massima.



- Reaktionskräfte in Betrieb
- Reaktionskräfte außer Betrieb
- Ohne Last, Ballast (und Transportachse), mit Maximalausleger und Maximalhöhe.



Reacciones en servicio
Reacciones fuera de servicio
Sin carga, sin lastre, (ni tren de transporte), flecha y altura máxima.



工作状态下的反应
非工作状态下的反应
空载无压重也无运输车
有吊臂和最大高度



Mécanismes
Antriebe



Mechanisms
Mecanismos



Meccanismi
机构



									ch - PS hp	kW
	20 TDPC 12	m/min	9	27,5	55	4,5	13,7	27,5	20	15
		Kg	2500	2500	1500	5000	5000	3000		
	20 LVF 12	m/min	5,5	27,5	55	2,7	13,7	27,5	20	15
		Kg	2500	2500	1500	5000	5000	3000		
	4 D3 V3-1	m/min	15 - 30 - 58						4	3
	RCV 51	tr/min U/min rpm	0 → 0,8						6	4,4
	TDV 324 R ≥ 8 m	m/min	25						2 x 4	2 x 3
		m/min	25						2 x 4	2 x 3
CEI 38		IEC 38		KVA						
400 V (+6% -10%) 50 Hz		30 kVA				84/534 - 87/405				

LMS 1

- Levage
- Distribution
- Orientation
- Translation
- Conforme aux directives CEE 84/534 et 87/405 sur le niveau acoustique



Hoisting
Trolleying
Slewing
Travelling
In compliance with the EEC 84/534 and 87/405 Instructions on noise level



Sollevamento
Distribuzione
Rotazione
Traslazione
Conforme alle direttive CEE 84/534 e 87/405 sul livello acustico



- Heben
- Katzfahren
- Schwenken
- Kranfahren
- Gemäss EWG-Richtlinien 84/534 und 87/405 für den Schall-Leistungspegel



Elevación
Distribución
Orientación
Traslación
Conforme con las directivas CEE 84/534 y 87/405 sobre el nivel acustico



起升
变幅
回转
行走
符合 CEE 84/534 - CEE 87/405 声响度规定



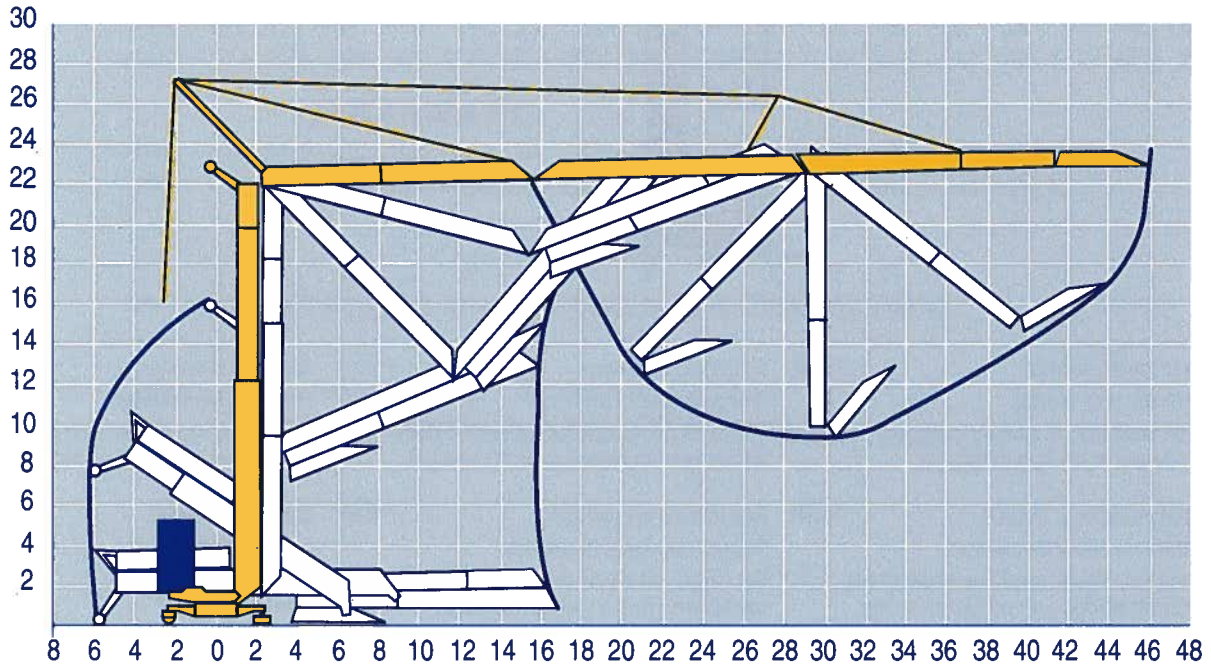
Montage
Montage



Erection
Montaje



Montaggio
安装



LMS 1

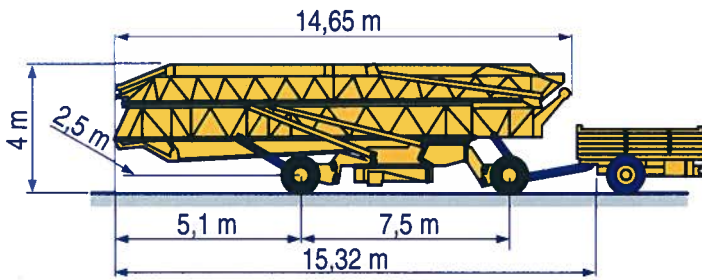
Transport
Transport



Transport
Transporte



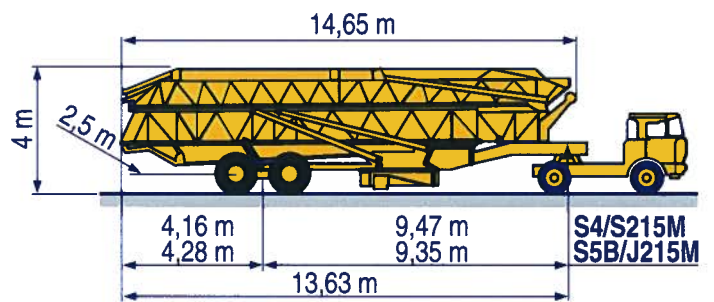
Trasporto
运输



15A/25A

DJ126M/S215M

CJ125M/J215M



S4/S215M
S5B/J215M

S4/S215M

S5B/J215M

LMS 1

POTAIN 
 GROUPE LEGRIS INDUSTRIES

18.Rue de Charbonnières, B.P. 173
 F-69132 ECULLY Cedex
 Tél. (33)04.72.18.20.20
 Fax (33)04.72.18.20.00
 http://www.potain.com
 E-mail : mkt@potain.fr

GTMR 346 A

Copyright.Reproduction interdite © POTAIN 1997

Deutschland
 POTAIN GmbH
Italia
 POTAIN S.p.A.
Singapore
 POTAIN PTE LTD

Tel : 06.105.704.0
 Tel : 0.331.49.33.11
 Tel : (00.65) 227.1550

Réf. 1997.44 LMS 5

Modificazioni riservate / Modifications réservées / Änderungen vorbehalten / Subject to modification / 修改或更改在方

Réalisation HeadLines

Printed in France